

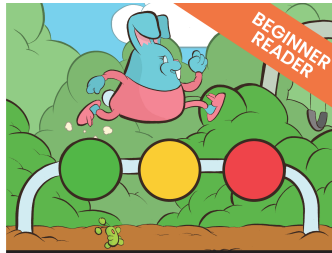
SOUND GUIDE

THE SOUNDS
(AND CORRESPONDING LEVELS)
OF OUR EXPANSIVE,
200+ EBOOK COLLECTION



Search for sounds based on level (or vice versa)!

Our collection ensures not only a well-rounded phonics education, but also plenty of opportunities for review!



HOP HOP STOP

Lexile® Range: BR200L - 0L
Phonics Focus: Segmentation



FAMILY FUN

Lexile® Range: 0L - 100L
Phonics Focus: Word Families



SOUND SPIES

Lexile® Range: 100L - 200L
Phonics Focus:
Sound / LetterDistinguishment



LIFE'S LESSONS (L2)

Lexile® Range: 100L - 200L
Phonics Focus: A-Z in Words



LIFE'S LESSONS (L3)

Lexile® Range: 200L - 300L
Phonics Focus: A-Z in Words



AESOP'S FABLES

Lexile® Range: 200L - 300L
Phonics Focus: Digraphs



ANIMAL PALS

Lexile® Range: 300L - 400L
Phonics Focus:
Digraphs / Short Vowels



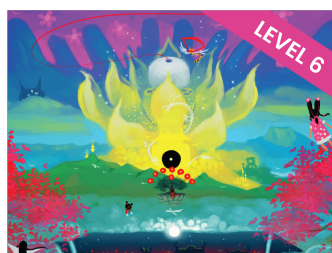
ZODIAC

Lexile® Range: 400L - 500L
Phonics Focus:
Digraphs / Long Vowels



INDIAN RIDDLES

Lexile® Range: 400L - 500L
Phonics Focus: Syllable Awareness



CHINESE MYTHS

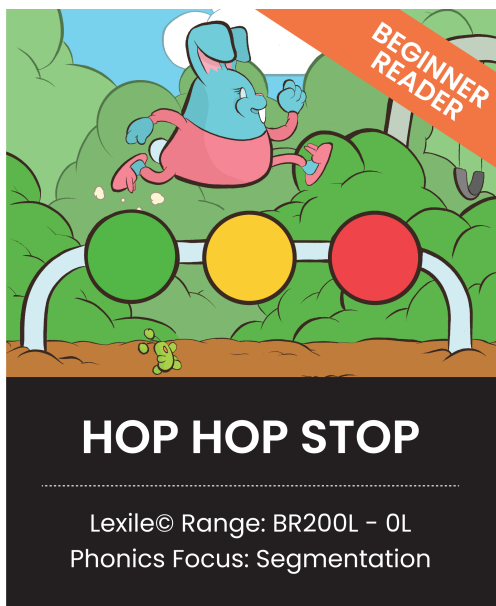
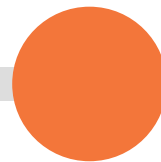
Lexile® Range: 500L - 600L
Phonics Focus: Fluency



LATIN LEGENDS

Lexile® Range: 600L - 700L
Phonics Focus: Vowels

BEGINNER READER



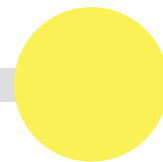
HOP HOP STOP SERIES |

Blending & Segmentation

→ *Phonics Focus: Breaking words into letter sounds and blending letter sounds into words*

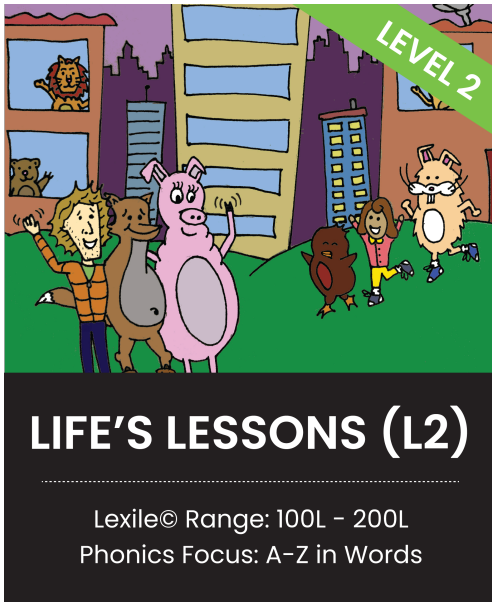


LEVEL 1

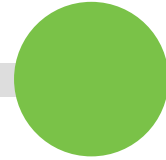


FAMILY FUN SERIES | Short vowels & vowel teams

→ *Phonics Focus: short a, e, i, o, u, ay, ee, y, ow, oo*



LEVEL 2



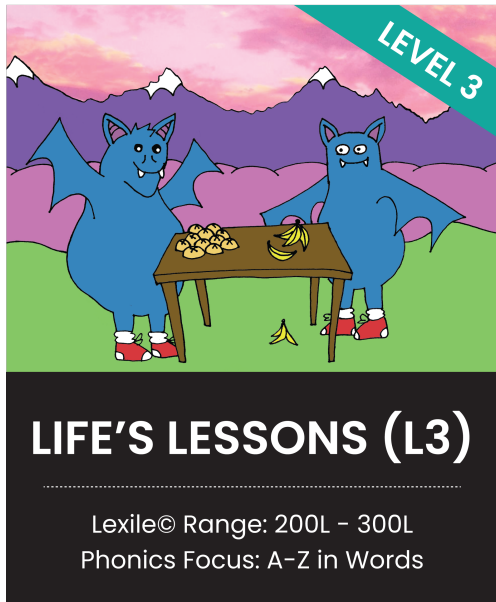
SOUND SPIES SERIES | Sound and letter distinguishment

→ *Phonics Focus: Similar letter looks (b/d, b/p, p/g, d/t, l/t), similar vowel sounds, long vs. short vowel sounds, punctuation, ending sounds*

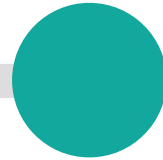
LIFE'S LESSONS (LEVEL 2)

SERIES | Short vowel review, consonants

→ *Phonics Focus: A-Z in words: short vowels, all consonants*



LEVEL 3



LIFE'S LESSONS (LEVEL 3)
SERIES | A-Z in words review:

short vowels & consonants

AESOP'S FABLES SERIES |

Digraphs, r-controls, initial
blends, ending blends

→ *Phonics Focus: -bb, ll, pp,
ss, ck, ch, qu, wh, th, sh, ng,
er/ir/ur, or, ar, r, initial
blends (l/r/s/t), ending
blends (l/m/n/s)*

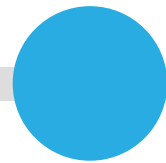


ANIMAL PALS

Lexile© Range: 300L – 400L

Phonics Focus:
Digraphs / Short Vowels

LEVEL 4



ANIMAL PALS SERIES | Short
vowel, consonant blends,
digraphs, r-controls

→ *Phonics Focus:* short
vowels, b blends, c blends,
d blends, f blends, g
blends, l blends, n blends,
p blends, s blends, t
blends, ck, wh, wr, kn, ph,
ar, or, ir, air, ear



ZODIAC

Lexile© Range: 400L - 500L

Phonics Focus:
Digraphs / Long Vowels

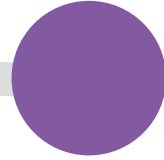


INDIAN RIDDLES

Lexile© Range: 400L - 500L

Phonics Focus: Syllable Awareness

LEVEL 5



ZODIAC SERIES | Vowel teams, digraphs, silent e, diphthongs, ending sounds

→ *Phonics Focus: -ai/ay, ea/ee/ey, ie/igh, oa/oe/ow, ue/ui/ew, silent e, oo, ou, ow, oi/oy, y, ch, sh, ck, wh, ng, th, ed, hard & soft c, hard & soft g, s ending, v, n ending, l ending, r*

INDIAN RIDDLES SERIES |

Multi-syllabic words

→ *Phonics Focus: 2 syllable words, 3 syllable words*



LEVEL 6

CHINESE MYTHS SERIES |

R-controls, long vowels, diphthongs, digraphs, soft c, soft g, ending sounds, complex blends

→ *Phonics Focus: -or, air, long I, ir/er/ur, ch, oy/oi, long E, ar, n ending, long U, long A, ough/aw, ion, ow/ou, l ending, long o, short oo, long oo, sh, thr/scr/spr/str/spl, v, th, soft g, soft c*



LEVEL 7

LATIN LEGENDS | Long vowels, short vowels, schwa sounds, diphthongs, r-controls

→ *Phonics Focus: long A/E/I/O/U, short a/e/i/o/u, schwa sounds, ow/ou, oi/oy, oo, ough/aw/au, ar, or, er/ir/ur, ear/eer, air/are/eir*

CONSONANTS



CONSONANTS

Bb /b/	Cc /k/	Dd /d/	Ff /f/	Gg /g/	Hh /h/	Jj /ʒ/
Kk /k/	Ll /l/	Mm /m/	Nn /n/	Pp /p/	Qq /k/	Rr /r/
Ss /s/	Tt /t/	Vv /v/	Ww /w/	Xx /ks/	Yy /j/	Zz /z/

DOUBLE LETTER CONSONANT DIGRAPHS

bb /b/	dd /d/	ff /f/	ll /l/	mm /m/
pp /p/	ss /s/	tt /t/	zz /z/	

CONSONANT DIGRAPHS

ch /tʃ/	ck /k/	kn /n/	ng /ŋ/	ph /f/	qu /kw/
sh /ʃ/	ss /s/	HARD th /ð/	SOFT th /θ/	wh /w/	wr /r/

CONSONANT BLENDS



INITIAL BLENDS

L BLENDS

bl /bl/	cl /cl/	fl /fl/	gl /gl/	pl /pl/	sl /sl/
------------	------------	------------	------------	------------	------------

R BLENDS

br /br/	cr /kr/	dr /dr/	fr /fr/	gr /gr/	pr /pr/	tr /tr/
------------	------------	------------	------------	------------	------------	------------

S BLENDS

sc /sk/	sk /sk/	sl /sl/	sm /sm/
sn /sn/	sp /sp/	st /st/	sw /sw/

T BLENDS

tr /tr/	ts /ts/	tw /tw/
------------	------------	------------

CONSONANT BLENDS



ENDING BLENDS

F BLENDS

ft
/ft/

L BLENDS

ld /ld/	lf /lf/	lk /lk/	lm /lm/	lp /lp/	lt /lt/
-------------------	-------------------	-------------------	-------------------	-------------------	-------------------

M BLENDS

mp
/mp/

N BLENDS

nd /nd/	nk /nk/	nt /nt/
-------------------	-------------------	-------------------

S BLENDS

sk /sk/	st /st/
-------------------	-------------------

COMPLEX BLENDS

scr /skɹ/	shr /ʃɹ/	spl /spl/	spr /spr/	str /stɹ/	thr /θɹ/
---------------------	--------------------	---------------------	---------------------	---------------------	--------------------

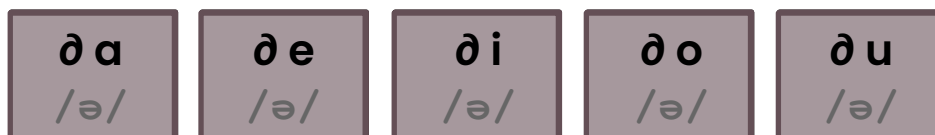
VOWELS



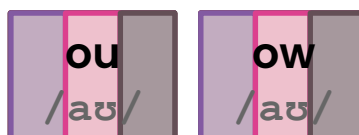
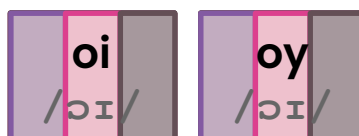
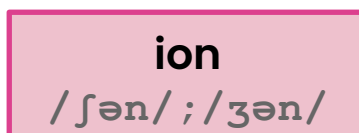
SHORT VOWELS



SCHWA



O VOWEL TEAMS



VOWELS



MAGIC E

a_e /eɪ/	e_e /i:/	i_e /aɪ/	o_e /o/	u_e /ju/
-------------	-------------	-------------	------------	-------------

LONG VOWELS

A /eɪ/	E /i:/	I /aɪ/	O /o/	U /ju/	Y /aɪ/
-----------	-----------	-----------	----------	-----------	-----------

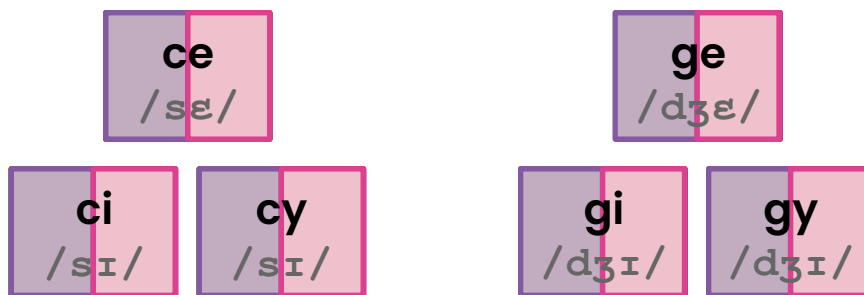
LONG VOWELS TEAMS

ai /eɪ/	ay /eɪ/	
ea /i:/	ee /i:/	ey /i:/
ia /aɪ/	ie /aɪ/	
oa /o/	oe /o/	ow /o/
ue /ju/; /u/	ui /ju/; /u/	ew /ju/; /u/

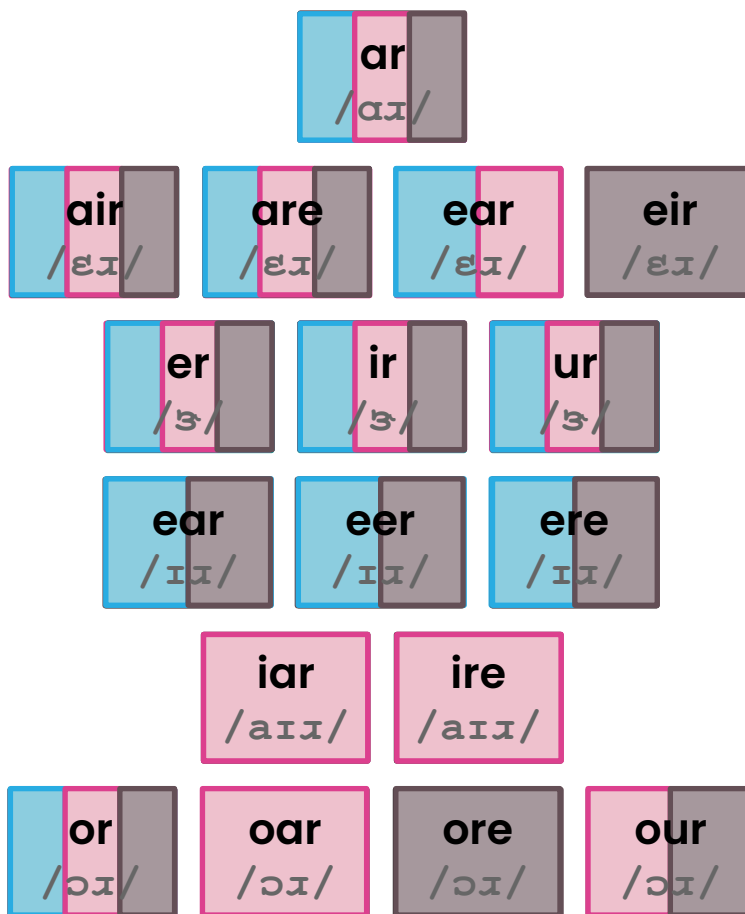
VOWELS & CONSONANTS



VOWEL-CONTROLLED C & G



R-CONTROLLED VOWELS



READING SKILLS



WORD END SOUNDS

-ang
/æŋ/

-ed
/d/ ; /ɪd/ ; /t/

-ing
/ɪŋ/

-er
/ɜ/

-ong
/ɔŋ/

-l
/??/

-ung
/ʊŋ/

-n
/??/

-s

/s/ ; /z/

-es

/ɪz/ ; /əz/

SYLLABLE SEGMENTATIONS

Segmentation & blending

2-syllable segmentation

3-syllable segmentation